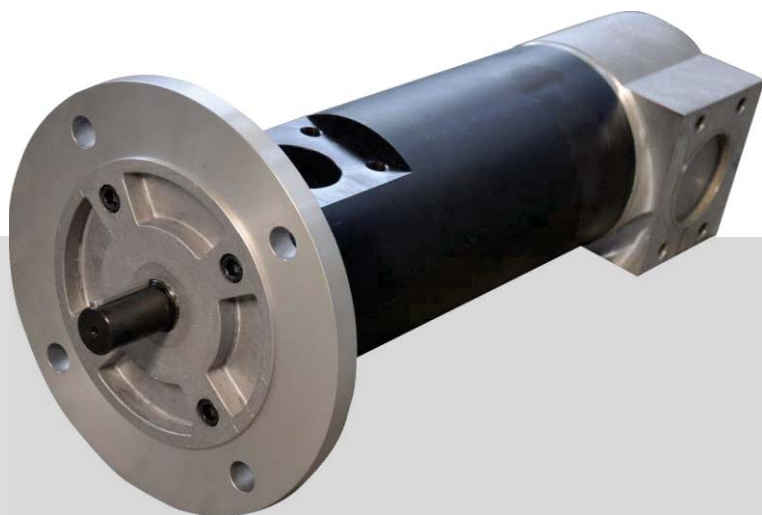




SMT SMAT (for USA market)

- *Fluid Types: mineral oils, synthetic fluid or emulsions, bunker oils, furnace oils, ecologic fluids, fuel oils (HFO, MDO, LFO, MGO)*
- *Viscosity: from 0,2 to 100.000 cSt*
- *Outlet Pressure: up to 100 bar*
- *Inlet Pressure: from -0,7 bar to 3 bar*
- *Flows: from 4 to 1.220 L/min*
- *Shaft Speed: from 500 to 3.600 rpm*
- *Acoustic Emissions: from 52 to 68 dB (A) at 2.950 rpm*
- *Temperature Range: from -50° C to +300° C*



This pump is especially suited for the following applications:

- | | |
|-----------------|--------------------|
| ▪ Cooling | ▪ Oil & Gas |
| ▪ Filtration | ▪ Power Generation |
| ▪ Industrial | ▪ Power Hydraulics |
| ▪ Lube Services | ▪ Tool Machines |
| ▪ Marine | ▪ Windmill |



Did you know? Settima SMT is one of the most versatile products from Settima range of three-screw pumps. The SMT pump is able to manage high-pressures, and therefore it can be utilized for an unrivalled (except for its low-pressure counterpart, the SMT16B) wide range of high-stress applications in very demanding fields, like high-pressure tool machines or marine, without compromising the reliability and the long life-span of the pump itself.