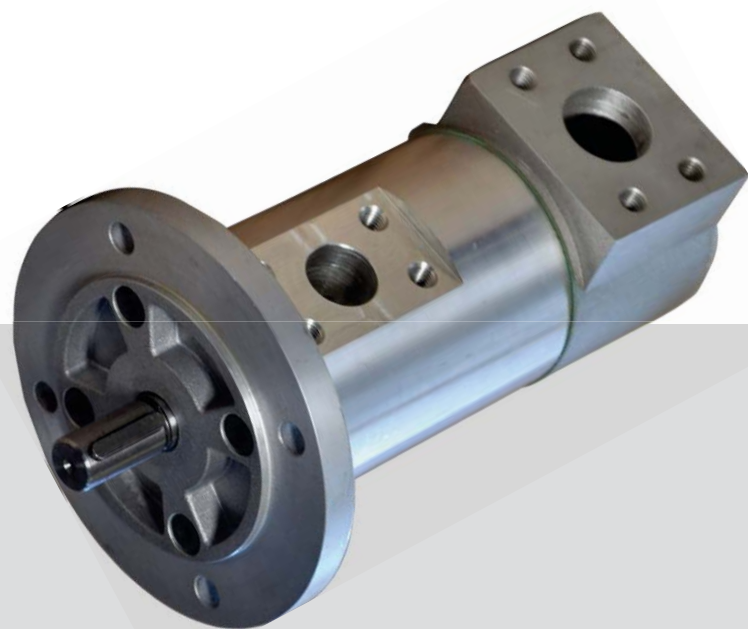


## SMT16B SMAT16B (for USA market)



- *Fluid Types: mineral oils, synthetic fluid or emulsions, bunker oils, furnace oils, ecologic fluids, fuel oils (HFO, MDO, LFO)*
- *Viscosity: from 10 to 10.000 cSt*
- *Outlet Pressure: up to 40 bar*
- *Inlet Pressure: from -0,7 bar to 3 bar*
- *Flows: from 4 to 5.500 L/min (GR125-GR180)*
- *Shaft Speed: from 500 to 3.600 rpm*
- *Acoustic Emissions: from 52 to 68 dB (A) at 2.950 rpm*
- *Temperature Range: from -50° C to +300° C*

This pump is especially suited for the following applications:

- |                 |                          |
|-----------------|--------------------------|
| ▪ Cooling       | ▪ Petrochemical Industry |
| ▪ Filtration    | ▪ Power                  |
| ▪ Industrial    | ▪ Hydraulics             |
| ▪ Lube Services |                          |
| ▪ Marine        |                          |



Did you know? Settima SMT16B is one of the most versatile products from Settima range of three-screw pumps. The SMT16B is designed precisely to manage the medium-pressures typical of a wide range of applications, like lube services, industrial or power hydraulics, while remaining extremely competitive on the market from the final price perspective.